



High Valley  
TRANSIT

# **Building public transit for the future.**

November 2021 - AZTA

## Introductions



**Krista Glotzbach**

Western US  
Partnerships for Via



**Caroline Rodriguez**

Executive Director of High  
Valley Transit in Summit  
County, Utah

# Transit goals in Summit County.

The following goals for Summit County's new transit system were identified through stakeholder engagement<sup>1</sup>:

- Reduce traffic congestion
- Improve job access
- Reduce demand for parking
- Support tourism
- Minimize environmental impact

**These goals will be met by designing a service that**

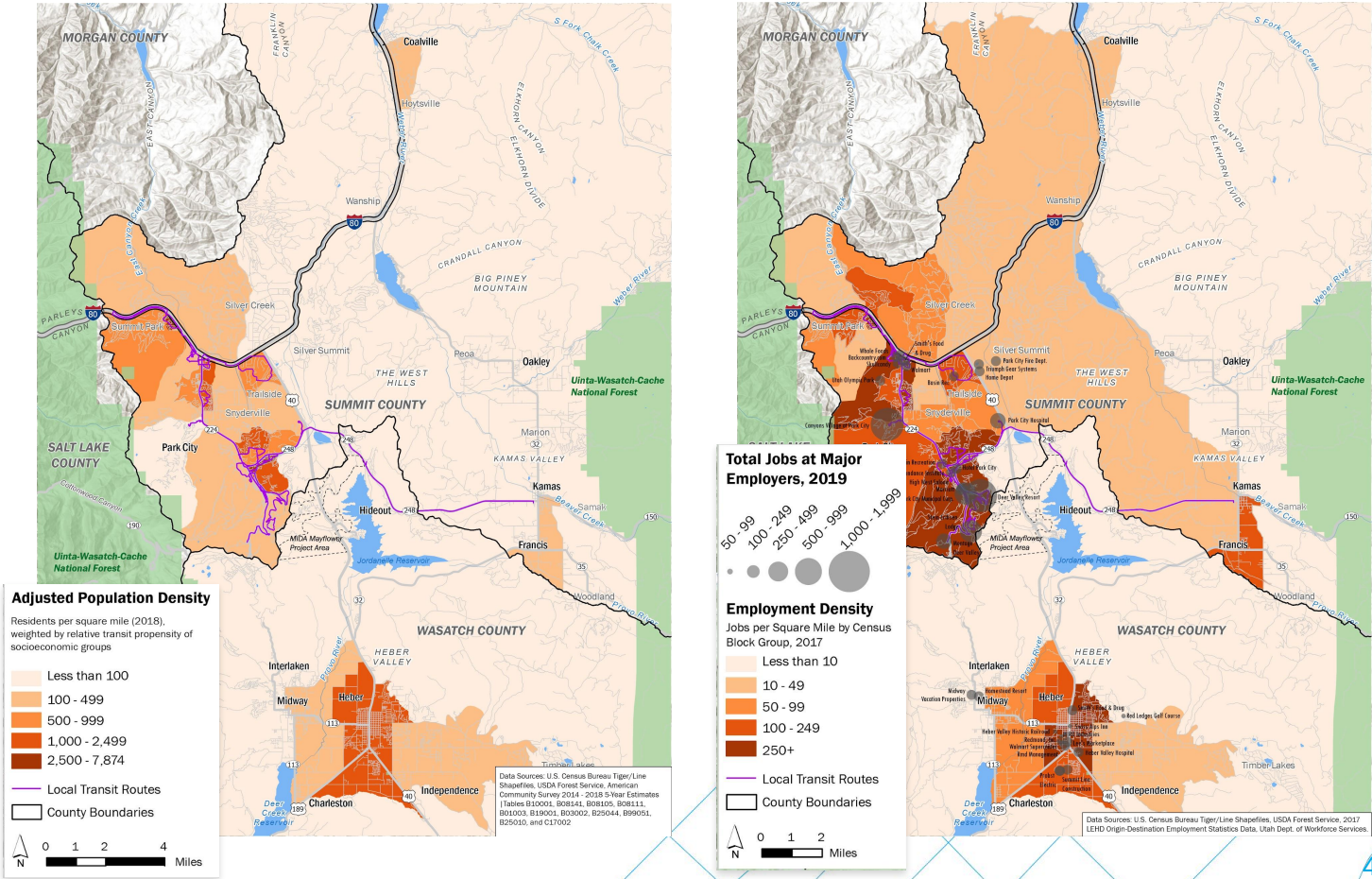
- Achieves high ridership
- Expands transit coverage, particular in areas where employees live and work.



1. Over 30 stakeholders were interviewed as part of this task



# Population & employment data.





# Infrastructure and amenities.

The following infrastructure and amenity needs were identified:

- **Technology.** An integrated mobile application for all Summit County transit services.
- **Multilingual communication.** All services should be provided in English and Spanish (at a minimum).
- **Ski and bike facilities.** Park City buses should accommodate skiers and bikers.
- **Bus stop amenities.** Bike and ski racks, enclosed or heated bus stops, real-time vehicle update screens.
- **Stop and sidewalk maintenance.** Speedy snow removal to ensure safe sidewalk access.



## High Valley Transit Service Map

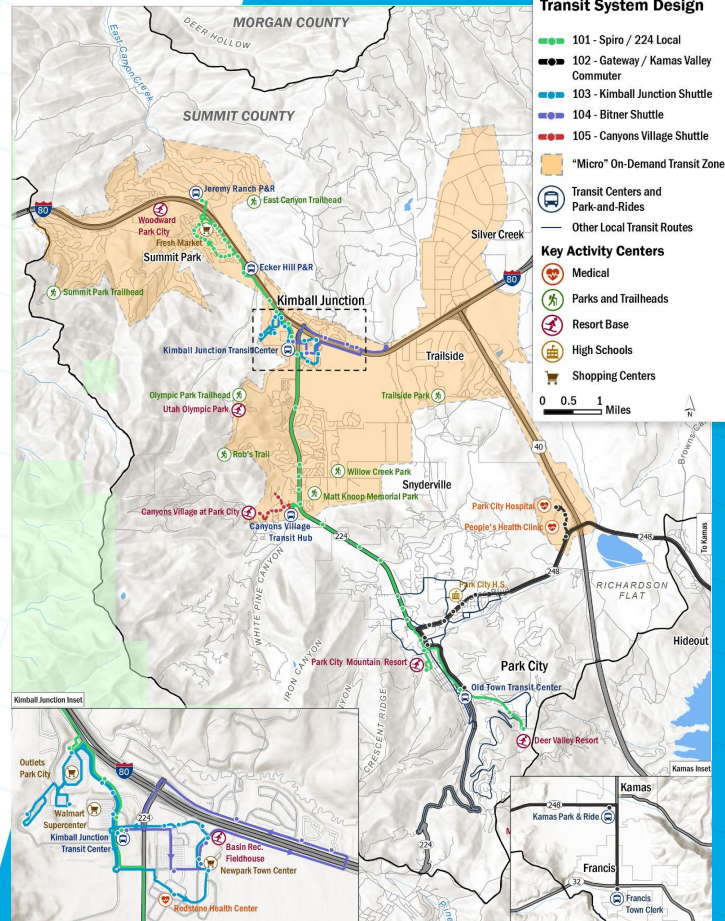


### Legend

- 101 - Spiro / 224 Local
- 102 - Gateway / Kamas Valley Commuter
- 103 - Kimball Junction Shuttle
- 104 - Bitner Shuttle
- 105 - Canyons Village Shuttle
- 10 White - Kimball Junction — Main Street Express (Operated by Park City Transit)
- Micro
- Major transit hub / transfer stop

\*Map not to scale.

### Proposed Phase 1 Transit System Design





**High Valley**  
TRANSIT

# Your route may look a little different going forward.

Starting July 1, High Valley Transit will replace some bus routes formerly operated by Park City Transit.

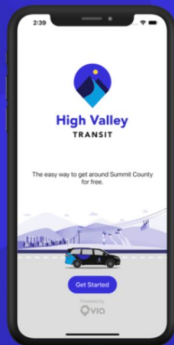
**Meet the 101 Spiro / 224 Local, replacing the 6 Lime and 7 Pink.**

We combined both routes into one high frequency route, going from Jeremy Ranch to Deer Valley. The 101 Spiro runs every 15 minutes or less, 365 days a year. Stops that are no longer served by the 7 Pink are now serviced by High Valley

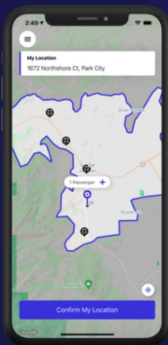
**Greetings to the 104 Bitner Shuttle, replacing the 8 Brown / Trailside Loop.**

The new and improved Bitner Shuttle operates in a larger loop that extends ever farther East! It runs every 15 minutes, and the loop begins and ends at the Kimball Junction Transit Center.

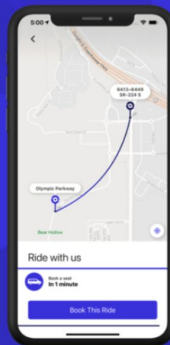
Plan trips straight  
from your phone.



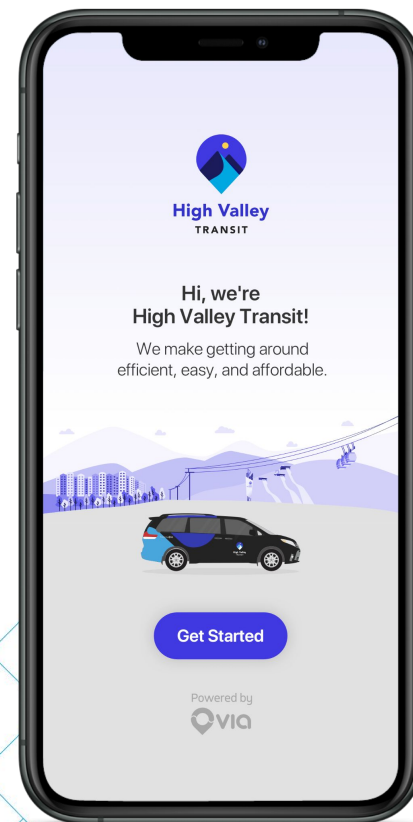
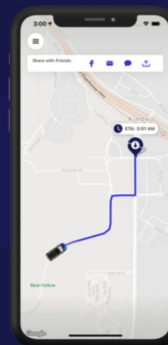
Tell us where  
you're going.



Choose a travel  
option.



Track your  
ride in real-time.





# High Valley Transit: Fixed route and intermodal.



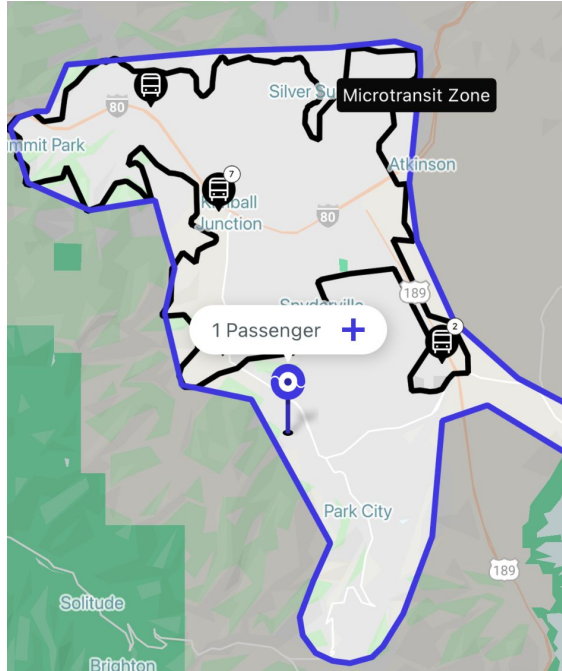
**Geography:**  
Suburban.



**Use case:**  
IMS:  
Fixed route,  
on-demand,  
paratransit.



**Fleet:**  
21 vehicles:  
40' Fixed  
route buses  
On Demand/  
Paratransit  
minivans.

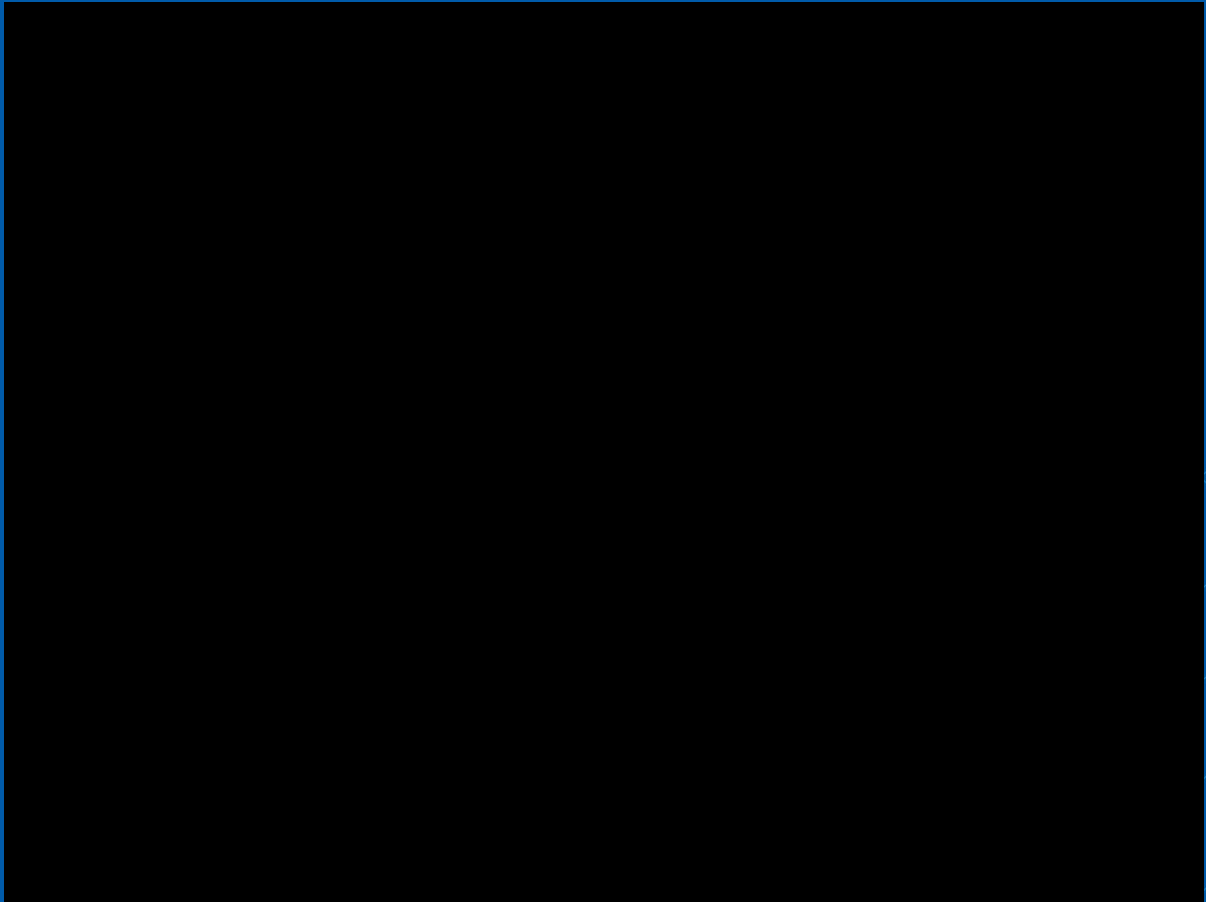




# Thank you.

**Caroline Rodriguez**  
crodriguez@highvalleytransit.org

**Krista Glotzbach**  
krista@ridewithvia.com



































Great Clips

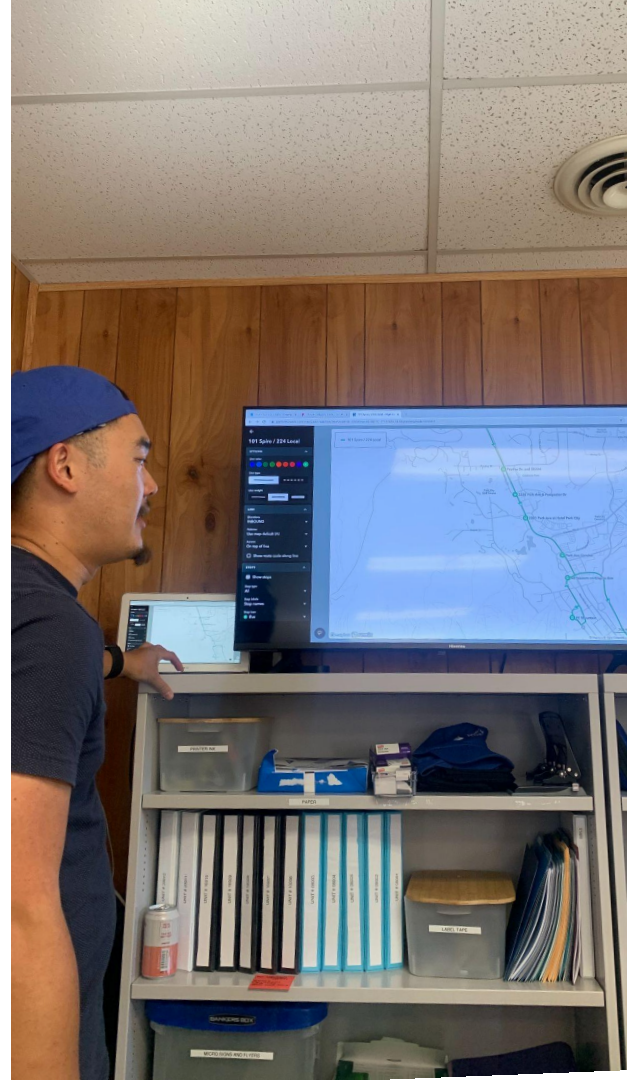
THE  
RED ROOM  
LUXURY COLLECTION

118



High Valley  
TRANSIT









Powered by  via



High Valley  
TRANSIT

USDOT 1364781



0004











**Thank you**